

Victoria Road

Ground Floor Plan - (Retail)

Scale Bar 1M 3M 5M 10M

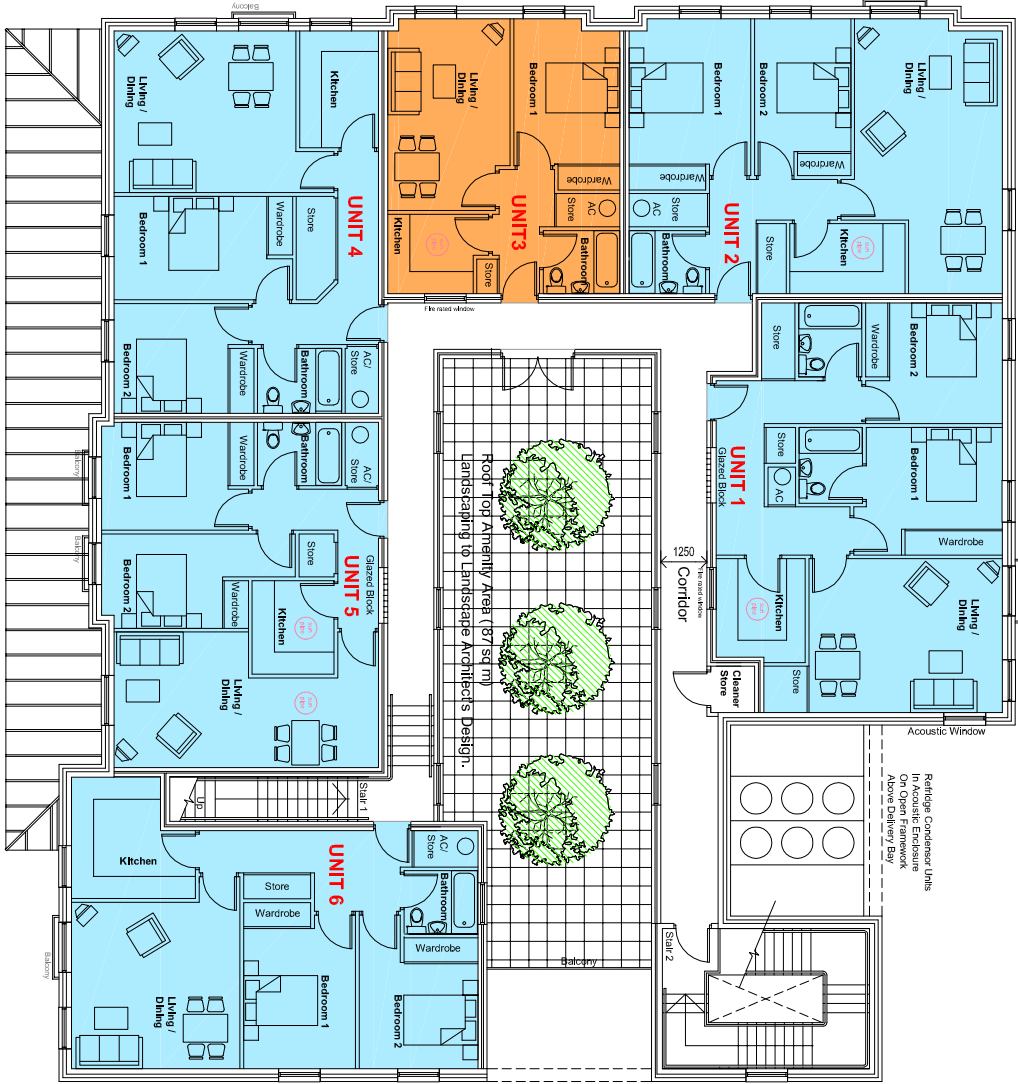
Ground Floor Level (Retail)

- Retail Unit
- Sale Area 468 sq m (5,037 sq ft)
- Back-up Area
- 117 sq m (1,259 sq ft)

8No. Cycle Parking Spaces for Retail to be provided
14No. Cycle Parking Spaces for Residential to be provided.
1No. 1,100 litre bulk bin with a height of 1,370mm,
length of 1,260mm and a width of 986mm to be
provided. 4No. 360 litre bulk bins with a height of 1,100mm,
length of 880mm and width of 580mm to be provided.

nicol thomas

architects **project managers** **construction cost consultants** **CDM co-ordinators**
Registered in England and Wales, Reg No. 2140539
Quality Assured to BS EN ISO 9001:1994 Certificate Number 08 4723
Suite 108 1st Floor Fort Dunlop Road Parkway Birmingham B24 9PD
(Registered Office) 0121902 388222 0121902 384080 edmin@nicolthomas.com
Also at Oldham
Do not scale from this drawing. All dimensions must be
checked and verified before preparing production drawings
copyright of Nicol Thomas Ltd and may not be reproduced
in any form whatsoever without their prior express written
consent.



First Floor Plan - (Residential)

Scale Bar 1M 3M 5M 10M

Shop Fronts to Food Retail Store

Polyester powder coated fibre box section framing with clear laminated double
glazing to specialist design.
Colour to be RAL 9016 - Traffic White.
Glazing to be 24mm overall thickness Pilkington Thermal double glazed unit. In
6.4mm clear toughened glass outer pane and 6mm Pilkington K toughened glass
inner pane with an air filled gap.

Pultruded Glass Fibre Windows

Factory assembled vertical sash windows by specialist design (Inwido UK Ltd) and
to be installed in accordance with manufacturer's recommendations window frames
to be factory finished in Brilliant White.

External Walls:

Inner Leaf (Apartments)
140mm thick TARMAC TOPCRETE 7N/mm 198kg/m³ laid weight and minimum
density 1900 kg/m³ standard solid dense concrete blockwork. Walls to be finished
in 13mm lightweight plaster of minimum mass per unit area of 10kg/m² with a skim
coat finish.
Inner Leaf (Store)
140 mm thick TARMAC HEMELITE fair faced solid concrete blockwork to
engineer's approval.

First Floor Level (Apartments)

- 1 No. 1 Bed Apartment
- 5 No. 2 Bed Apartments

Apartment (Internal Areas)

- 2B x 3P 79 sq m (850sq ft)
- 2B x 3P 73 sq m (786 sq ft)
- 1B x 2P 45 sq m (484 sq ft)
- 2B x 3P 72 sq m (773 sq ft)
- 2B x 3P 68 sq m (732 sq ft)
- 2B x 3P 73 sq m (786 sq ft)

Please note areas given above are including
internal stud partitions, and subject to final
site dimensions

nicol thomas

Client:	Mr. C Mills			
Job:	VICTORIA ROAD MORTIMER			
Drawing title:	PROPOSED FLOOR PLANS			
Drawing Number:	B3410	PL	102	Revision:
Scale:	1:100EAL			
Date:	May 2008			
Drawn by/ checked by:	NA /LC			